

Clutch Disengage Travel Adjustment

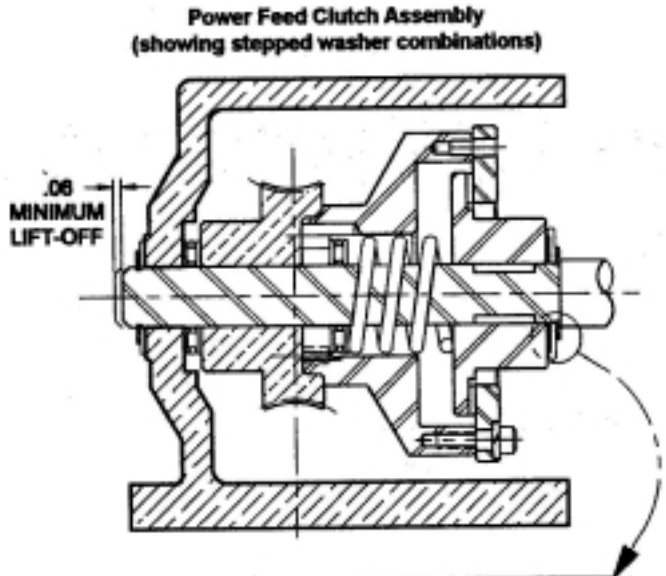
Manufacturing tolerance variations combined with wear factors require the need for variable clutch lift off adjustment. Stepped washer (01134) facilitates (4) fixed adjustments in .015 increments when used in conjunction with thrust washer (40020) located at the end of the shaft at the gear box.

The disengaging lever (01139) mechanism provides over-travel to accommodate the appropriate lift off (not enough stepped washer thickness) will not completely disengage the clutch. A binding will be noticed with manual movement of the slide with clutch disengaged.

Proper lubrication between the hub (01124) and segmented ring (01140) will reduce or eliminate the need for readjustment from original factory settings by lubricating the unit periodically at grease fitting (10681)

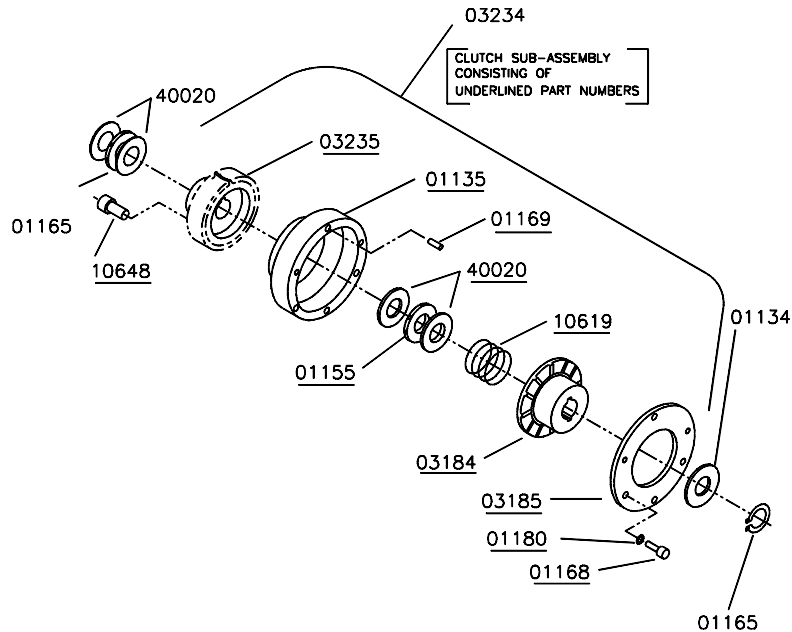
The term "Lift-off" is used to signify the travel of the engagement rod to lift off the clutch -- not including the free-play movement. A minimum of .060 lift off is required to disengage the clutch.

The combined stack heights will allow adjustment in .015 increments to obtain the correct measurements. If the lift-off is inadequate, move to the next thicker stack increment. After the clutch disengages properly, remove the four screws and plate covering the observation window. Check to see if the clutch plate and cover are fully meshed together. If not, move to the next thinner stack increment.



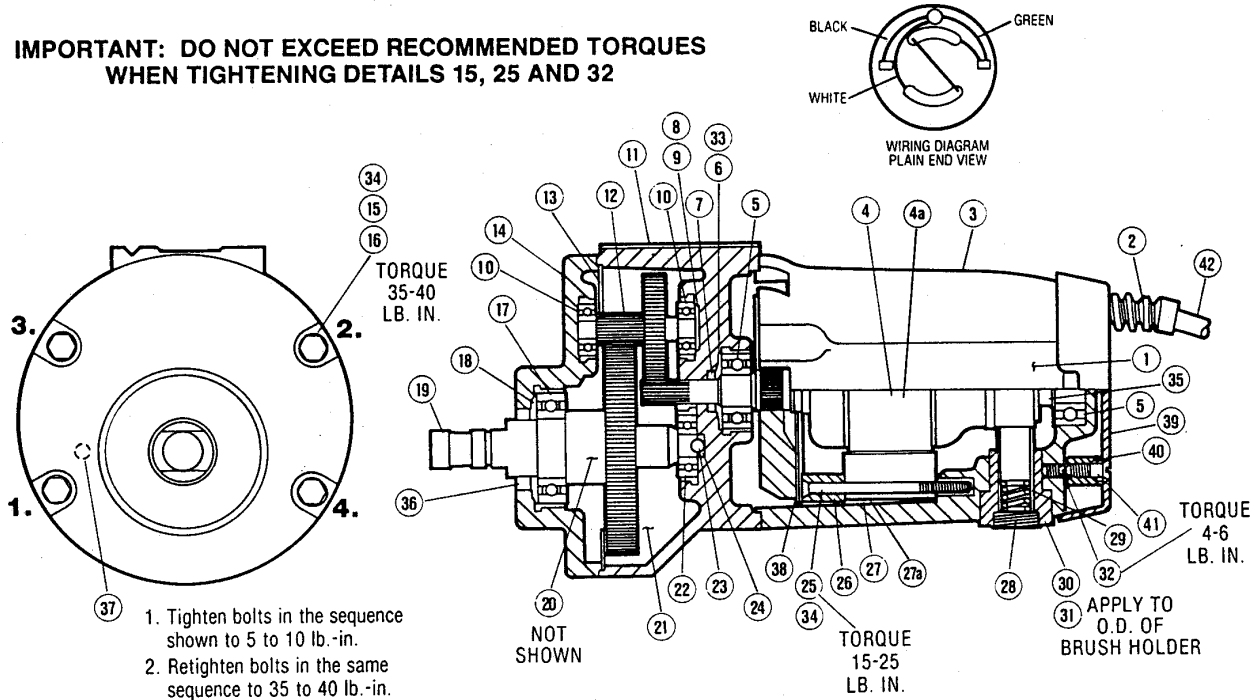
	MINIMUM LIFT-OFF	1
	↓	2
	↓	3
	MAXIMUM LIFT-OFF	4

Clutch Assembly

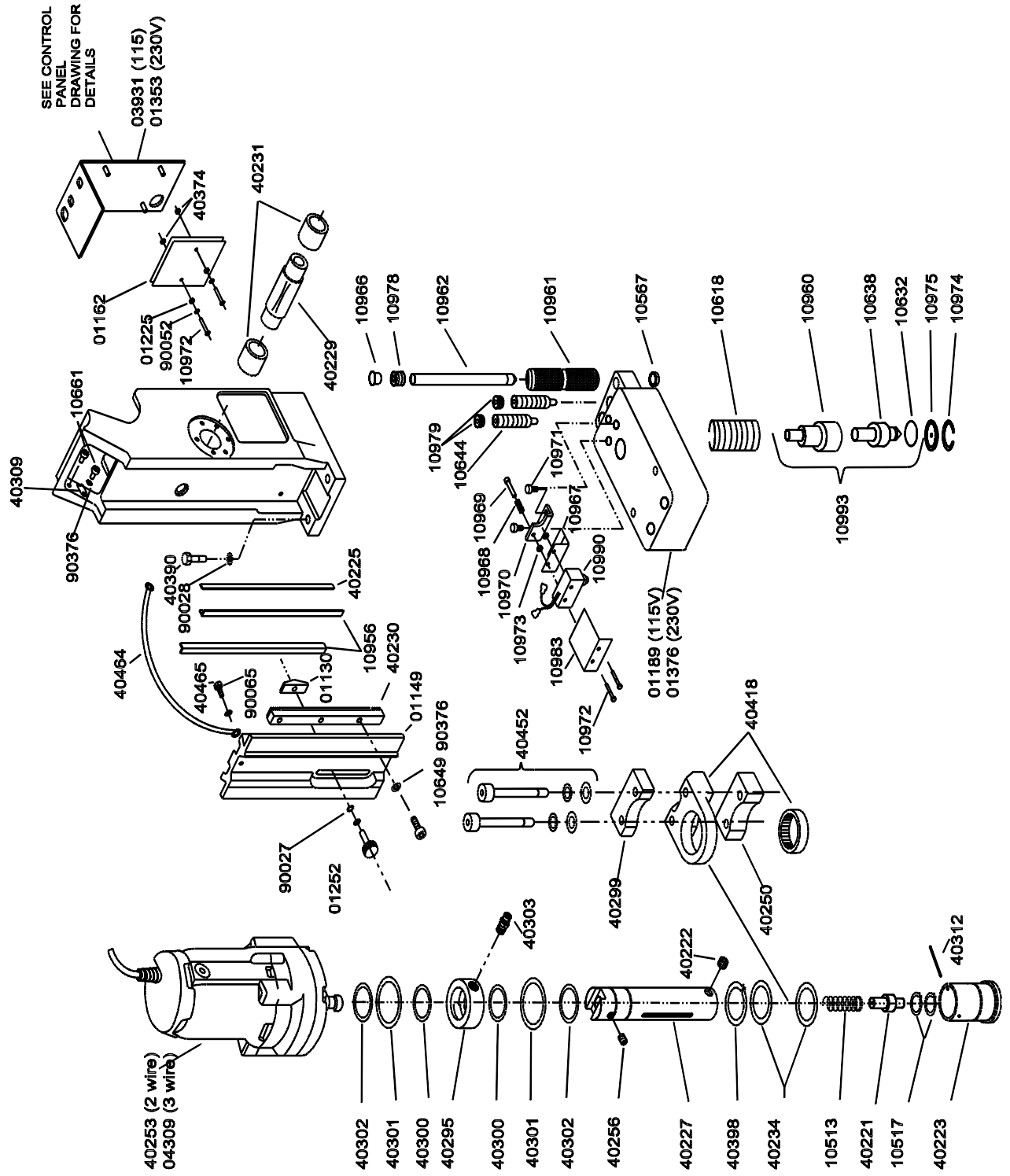


Motor Parts Diagram

**IMPORTANT: DO NOT EXCEED RECOMMENDED TORQUES
WHEN TIGHTENING DETAILS 15, 25 AND 32**



Detail No.	Part No.	Description	No. Req'd.	Detail No.	Part No.	Description	No. Req'd.
1	40291	Connector	1	25	40383	Screw #10-32	2
2	40445	Strain relief	1	26	40384	Spacer, Baffle	1
3	40260	Housing, Brush End	1	27	40284	Field Assy 115V (2 wire)	1
4	40261	Armature Assy. - 115V	1		04308	Field Assy 115V (3 wire)	1
4a	01087	Armature Assy. - 230V	1	27a	01088	Field Asst 230V	1
5	40262	Bearing	2	28	40285	Brush Plug	2
6	40263	Spring, Flat	1	29	40286	Brush Carbon	2
7	40264	Seal	1	30	40287	Brush Holder	2
8	40265	Spring, Flat	1	31		Loctite 271	
9	40266	Washer	1	32	40289	Screw #10-32 x 1/4"	2
10	40267	Bearing	2	33	40290	Washer	1
11	40268	Housing, Gear	1	34		Loctite 242	
12	40269	Gear, Cluster	1	35	40292	Retaining Ring	1
13	40270	Gasket	1	36	40348	Seal	1
14	40271	Cap, Gear Housing	1	37	40349	Plug	1
15	40298	Screw 1/4-20x 3-1/2	4	38	40382	Baffle	1
16	40273	Lock Washer 1/4"	4	39	40441	End Cap	1
17	40274	Bearing	1	40	40449	Spacer	2
18	40275	Spring, Flat	2	41	40450	Screw #10-32x1"	2
19	40276	Gear, Output	1	42	40258	Motor Cord (2 Wire)	1
20	40277	Pin, Locating	1		04204	Motor Cord (3 Wire)	1
21	40350	Grease, Syntech	8 oz	*	90424	Clip, Brush Holder	2
22	40279	Bearing	1				
23	40280	Ball	1				
24	40281	Slug	1				



Electrical Panel Layout Diagram

