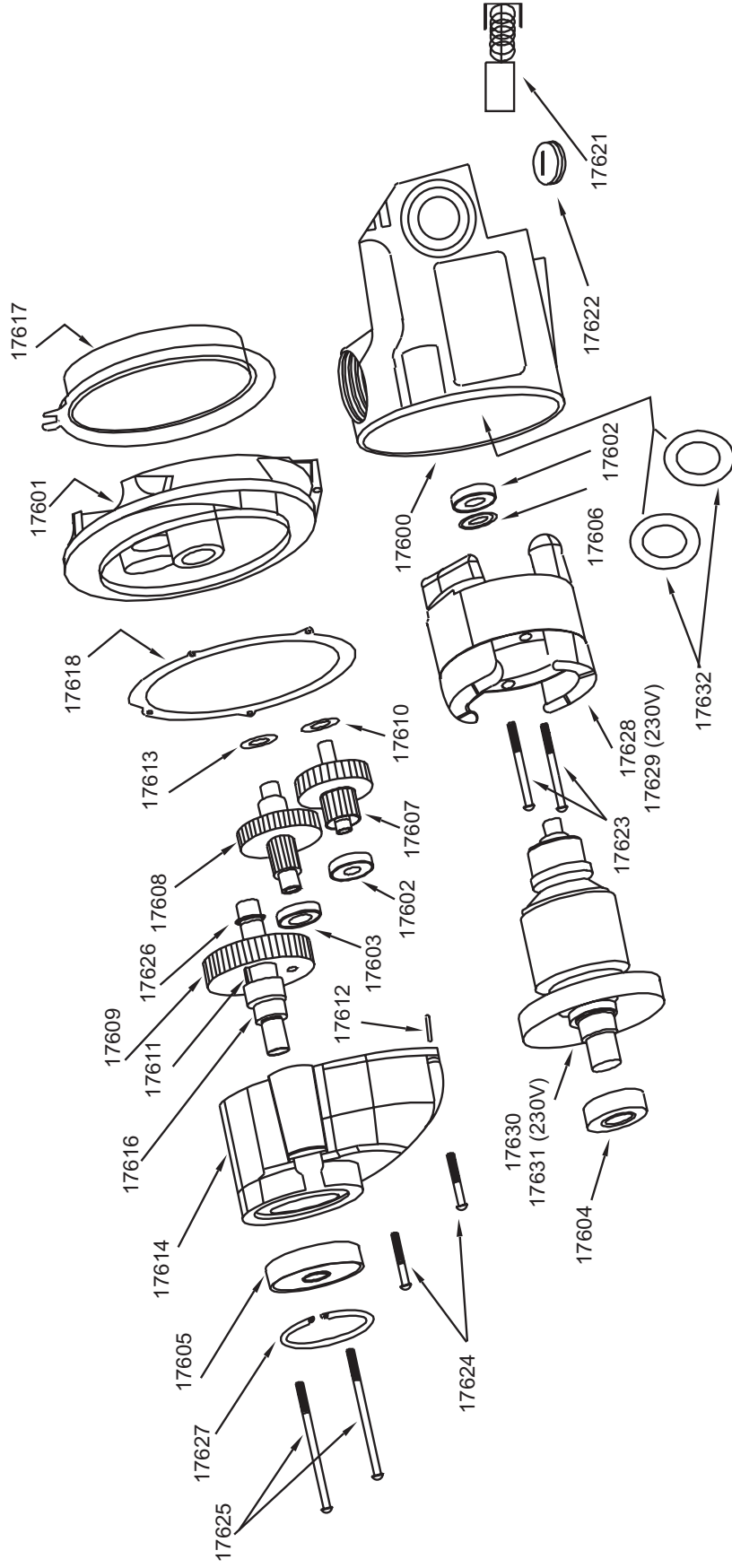
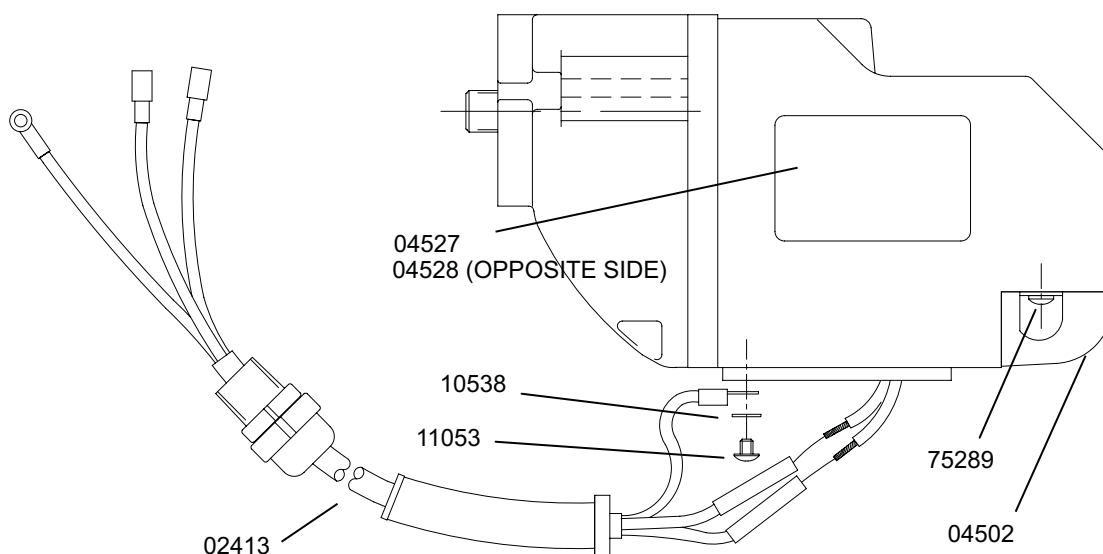


MOTOR PARTS DIAGRAM



04503 MOTOR ASSEMBLY



11053 BOLT TORQUE SPECIFICATIONS - TIGHTEN TO 18 IN-LBS
 75289 BOLT TORQUE SPECIFICATIONS - TIGHTEN TO 25 IN-LBS

MOTOR PARTS LIST

PART NO.	DESCRIPTION	QTY. REQ'D.	PART NO.	DESCRIPTION	QTY. REQ'D.
04503	MOTOR ASSY. REPLAC.		17611	KEY	1
04527	LABEL, MOTOR SPECS.	1	17612	DOWEL PIN	1
04528	LABEL, MOTOR HMD904	1	17613	FLAT WASHER	1
02413	MOTOR CORD ASSY.	1	17614	GEAR HOUSING	1
11053	SCREW, BHS #8-32	1	17616	SPINDLE	1
10538	WASHER #8 EXT.	1	17617	FAN GUIDE	1
04502	BRUSH COVER	1	17618	GASKET	1
75289	PAN HEAD SCREW	2	17630	ARMATURE	1
17600	FIELD CASE	1	17628	FIELD	1
17601	GEAR HOUSING COVER	1	17621	CARBON BRUSH	2
17602	BALL BEARING	2	17622	BRUSH CAP	2
17603	BALL BEARING	1	17623	PAN HEAD SCR.-FIELD	2
17604	BALL BEARING	1	17624	PAN HEAD SCR.-SHORT	2
17605	BALL BEARING	1	17625	PAN HEAD SCR.-LONG	2
17606	DUST SEAL	1	17626	RETAINING RING	1
17607	1ST. INTER GEAR ASSY	1	17627	RETAINING RING	1
17608	2ND. INTER GEAR ASSY	1	17632	PAPER WASHER	2
17609	SPUR GEAR	1			
17610	FLAT WASHER	1			