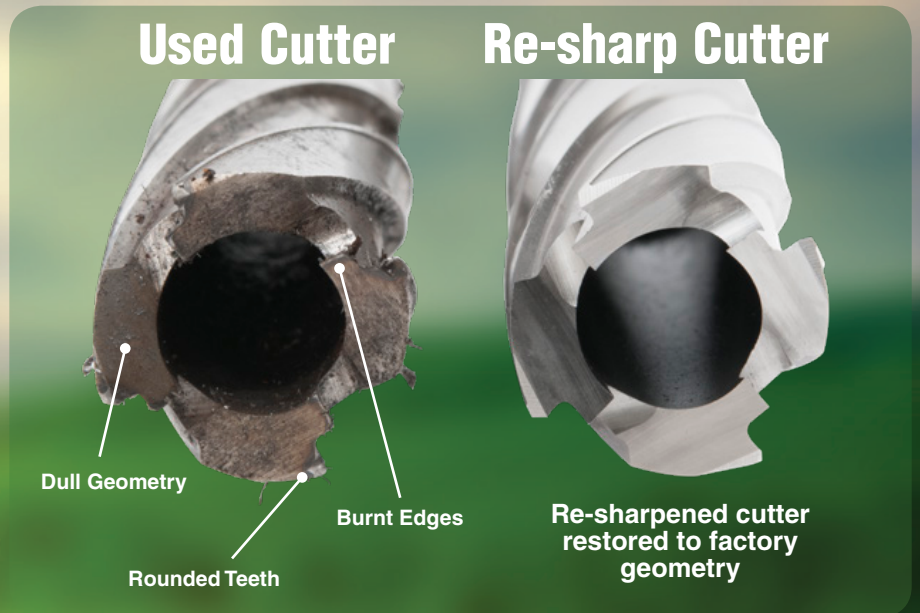




Re-Sharp / Re-Use Service

By using Hougen annular cutters, you save time and money. But taking advantage of Hougen's "Re-Sharp / Re-Use" Service will save you even more money, plus it's better for the environment. Resharpenering a cutter is much less expensive then buying a new cutter and it cuts like new.

"For a Greener Tomorrow"



Did You Know?

A typical Hougen "12,000-Series" can be resharpened up to 12 times before the cutter needs to be recycled!

How it Works...

Just send in your used Hougen "12,000-Series" or RotaLoc Plus™ cutters to a Hougen "Re-Sharp / Re-Use" Service Center. Once we receive your tools, we will resharpen them and ship them back to the Hougen distributor of your choice for you to pick up & pay.

See your local distributor for details



HOUGEN MANUFACTURING, INC.

3001 Hougen Drive • Swartz Creek, MI 48473 USA
Ph: (810) 635-7111 • Fax: (810) 635-8277
info@hougen.com • www.hougen.com

Cutters with chipped, broken teeth or cracks cannot be resharpened.

HOUGEN RESHARP EVALUATION FORM

**This form must be completely filled out and sent in with the cutters. Any cutters received without the form will delay the process. Send cutters and form to the address below
Attn: Hougen Resharp Dept.**

Date: _____ Submitted By: _____

Company Name: _____ Contact: _____

Company Address: _____

Phone: _____ Email: _____

If you are an end user sending directly to Hougen, you must fill out your local Hougen distributor info. Hougen will not bill you directly. All billing will go through your local distributor.

Distributor Name: _____ Contact: _____

Distributor Address: _____

Phone: _____ Email: _____

Distributor PO Number: _____

Series of Cutters Returned: _____ Qty of Cutters: _____

Contact your local distributor for resharp pricing

Shipping Through a Distributor

1. Drop off cutters at your local distributor.
2. Distributor will ship the cutters to Hougen.
3. Distributors will provide a PO if no estimate is needed.
4. If an estimate is required, one will be submitted to the information above.
5. Cutters will be added to the resharp rotation.
6. Cutters can be returned to the distributor or drop shipped directly to the customer.

Shipping Directly to Hougen

1. Ship cutters to Hougen and include completed form.
2. An estimate will be provided to the distributor above.
3. Once PO is received from the distributor, cutters will be added to the resharp rotation.
4. Cutters can be returned to the distributor or drop shipped directly to customer.

All cutters are resharpened on a first come, first served basis. Additional charges may apply for rush services. Turn around time for resharp varies depending on number of pcs, if the tool is coated, etc. Generally 7-10 business days once PO is received. For questions regarding Hougen resharp contact tech@hougen.com or call (810) 635-7111



HOUGEN MANUFACTURING INC.

Attn: Hougen Resharp Dept
3001 Hougen Dr • Swartz Creek, MI 48473
(810) 635-7111 • www.hougen.com